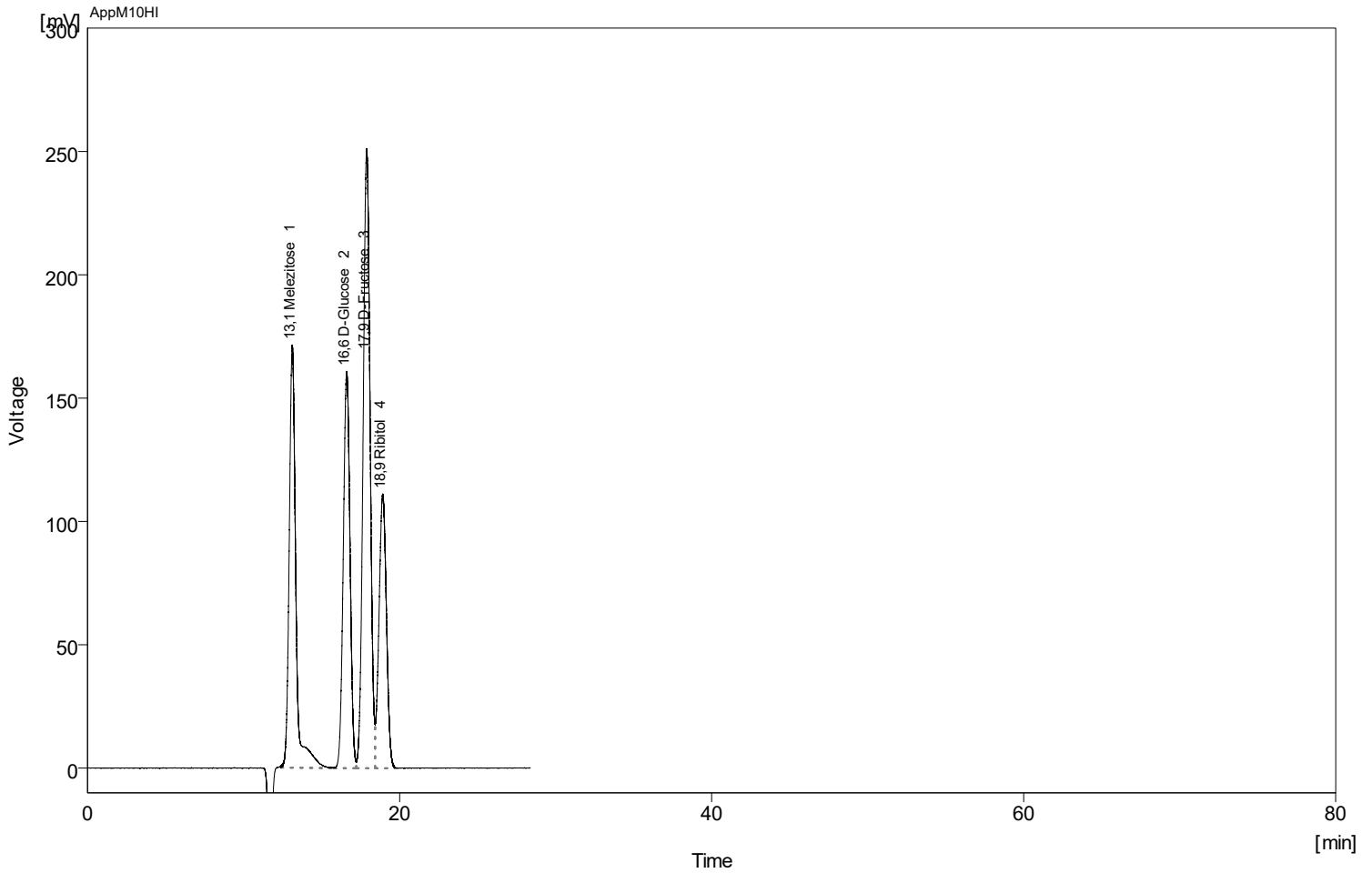


Column : AppliChrom SugarSep-H I; 300mm x 8mm; P/N SASHI103008 Detection : RI
 Mobile Phase : H2O / 5mMH2SO4 Temperature : 40C
 Flow Rate : 0.4 mL/min Pressure : -
 Note : Sample Test M10 / Sugar - Sugar Alcohol



Clarity Lite - 22.06.2023 10-33_20

	Reten. Time [min]	Compound Name	Asymmetry [-]	Efficiency [th.pl]	Eff/I [t.p./m]	Resolution [-]
1	13,12	Melezitose	1,08	5607	18688	
2	16,61	D-Glucose	1,02	6965	23217	4,67
3	17,89	D-Fructose	1,04	7484	24947	1,58
4	18,91	Ribitol	1,01	7258	24194	1,20