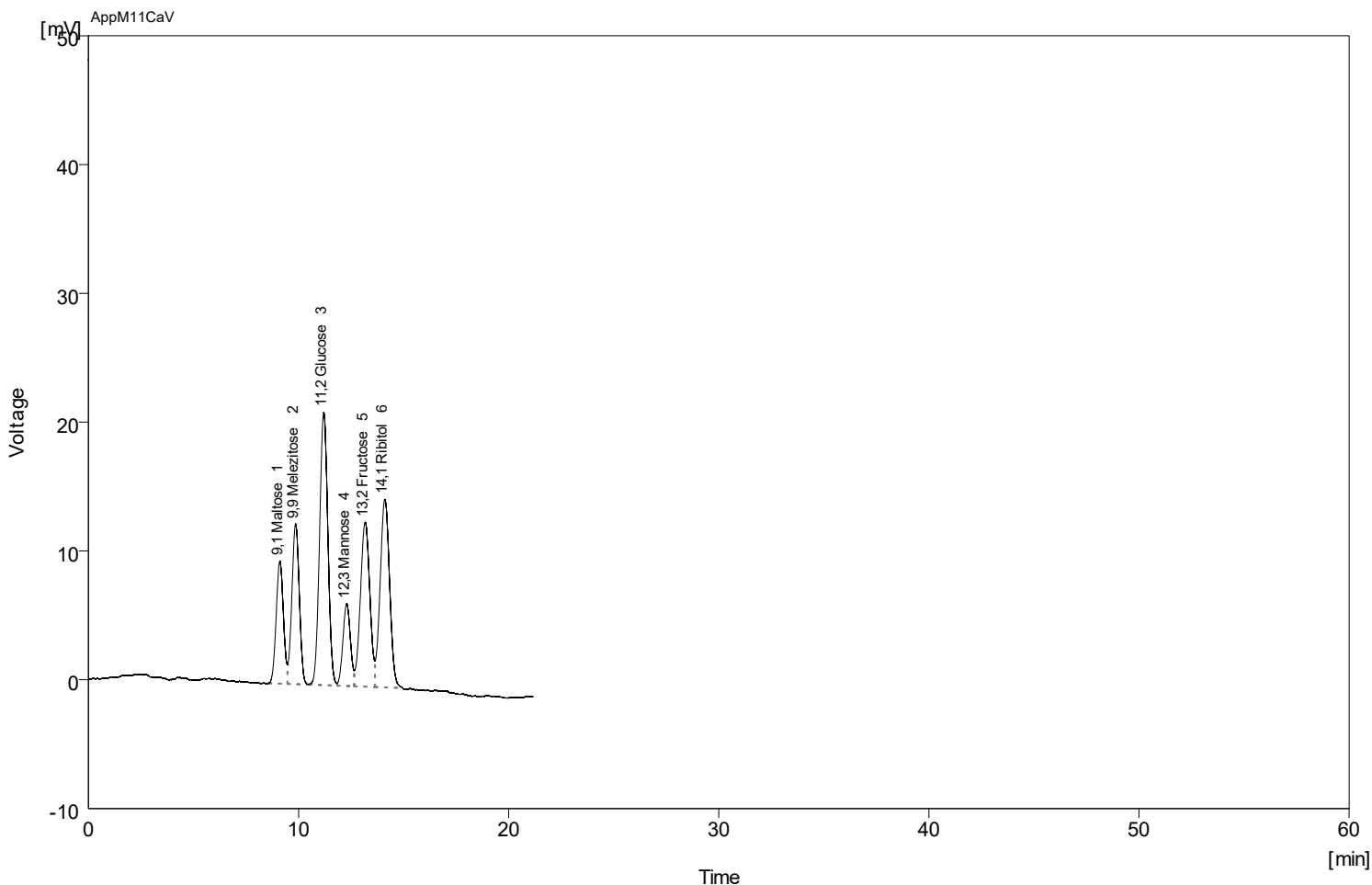


Column : AppliChrom SugarSep-Ca V; 300mm x 8mm; P/N SASCAV103008 Detection : RI  
 Mobile Phase : H2O Temperature : 85C  
 Flow Rate : 0.6 mL/min Pressure : -  
 Note : Sample Test Mix / Sugars - Sugar Alcohol



Clarity lite - 19.07.2023 11\_05\_27

	Reten. Time [min]	Compound Name	Asymmetry [-]	Efficiency [th.pl]	Eff/l [t.p./m]	Resolution [-]
1	9,12	Maltose	1,04	3230	10766	
2	9,85	Melezitose	0,94	3583	11942	1,14
3	11,20	Glucose	1,04	3755	12517	1,94
4	12,29	Mannose	1,04	5406	18022	1,57
5	13,17	Fructose	0,96	3949	13162	1,18
6	14,09	Ribitol	1,02	4568	15226	1,11