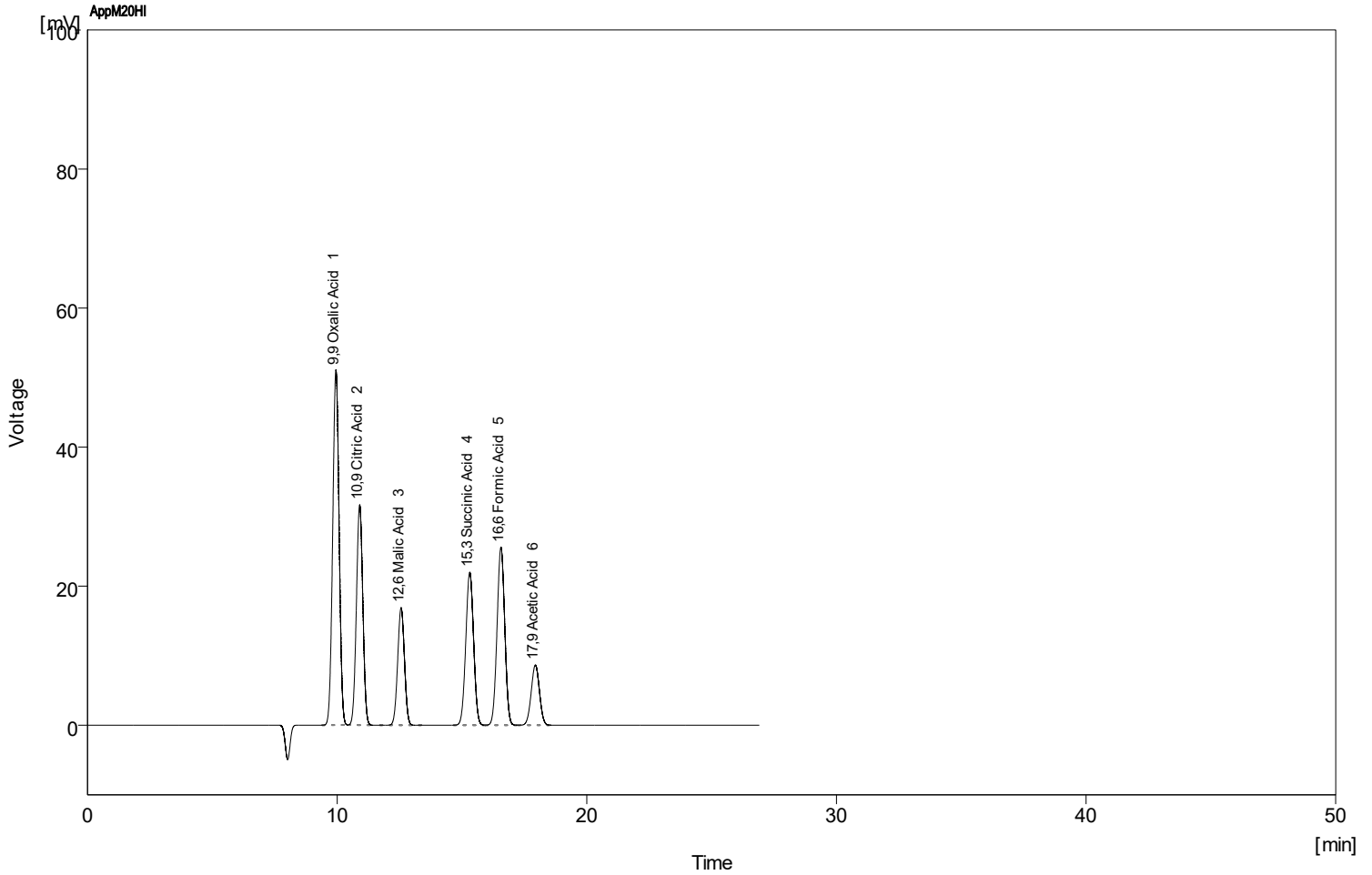


Column : AppliChrom SugarSep-H I; 300mm x 8mm; P/N SASHI103008 Detection : RI
 Mobile Phase : H2O/5mM H2SO4 Temperature : 35C
 Flow Rate : 0.6 mL/min Pressure : -
 Note : Sample Test Mix / Organic Acids



Clarity Lite - 29.03.2023 14_40_24

	Reten. Time [min]	Compound Name	Asymmetry [-]	Efficiency [th.pl]	Eff/I [t.p./m]	Resolution [-]
1	9,949	Oxalic Acid	0,999	6995	23316	
2	10,900	Citric Acid	1,001	8295	27651	1,996
3	12,560	Malic Acid	1,051	9929	33096	3,387
4	15,310	Succinic Acid	1,003	11123	37075	5,084
5	16,560	Formic Acid	1,011	13403	44675	2,174
6	17,940	Acetic Acid	1,016	13630	45433	2,332