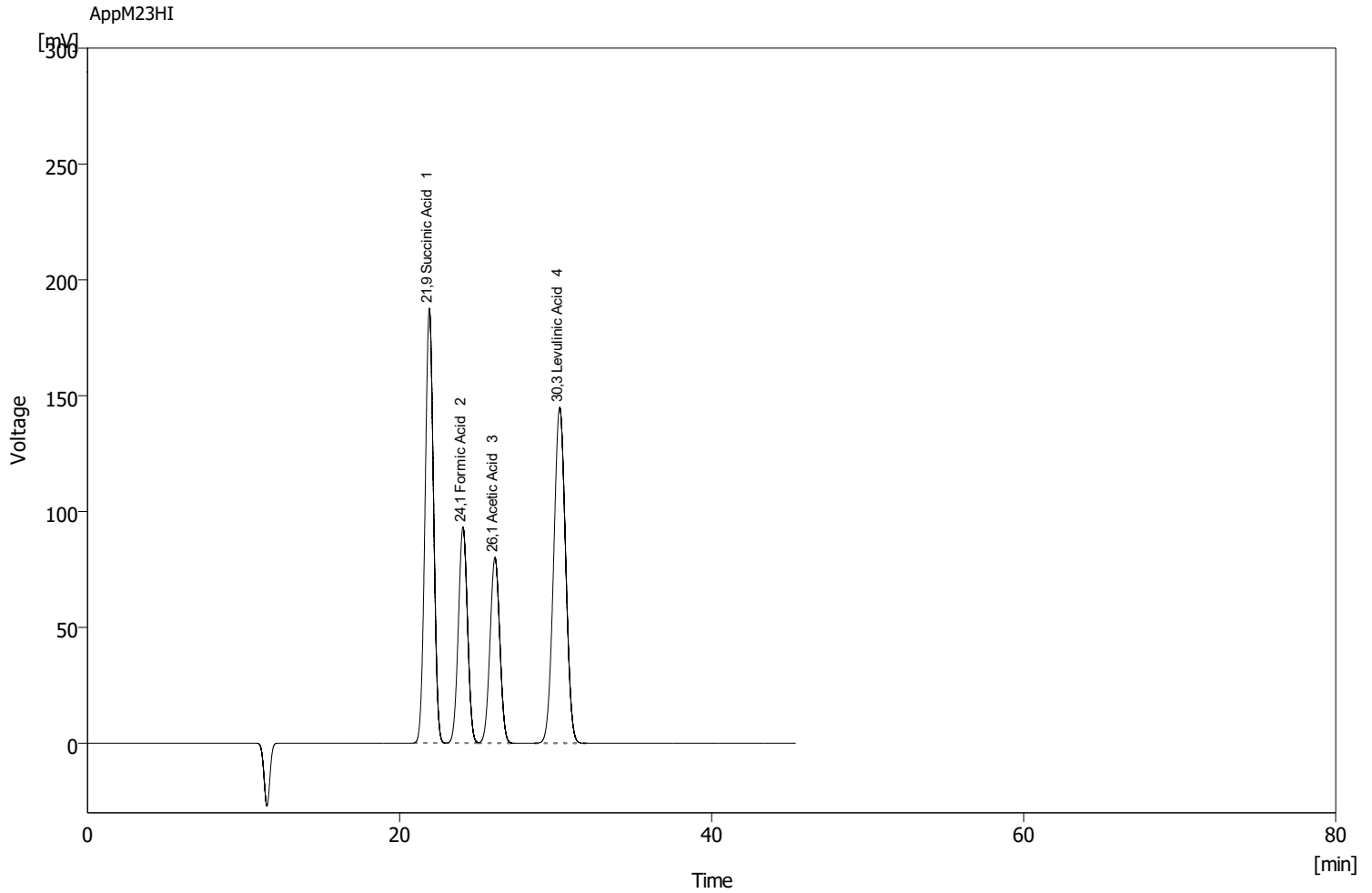


Column : AppliChrom SugarSep-H I; 300mm x8mm  
 Mobile Phase : H2O/5mMH2SO4  
 Flow Rate : 0.4mL/min  
 Note : Sample Text Mixture / Organic Acids

Detection : RI  
 Temperature : 40C  
 Pressure : -



Clarity Lite - 04042023 09\_20\_23

	Reten. Time [min]	Compound Name	Asymmetry [-]	Efficiency [th.pl]	Eff/I [t.p./m]	Resolution [-]
1	21,906	Succinic Acid	1,011	7551	25172	
2	24,062	Formic Acid	1,050	7872	26239	2,065
3	26,112	Acetic Acid	1,023	8089	26963	1,830
4	30,262	Levulinic Acid	1,080	7335	24450	3,233