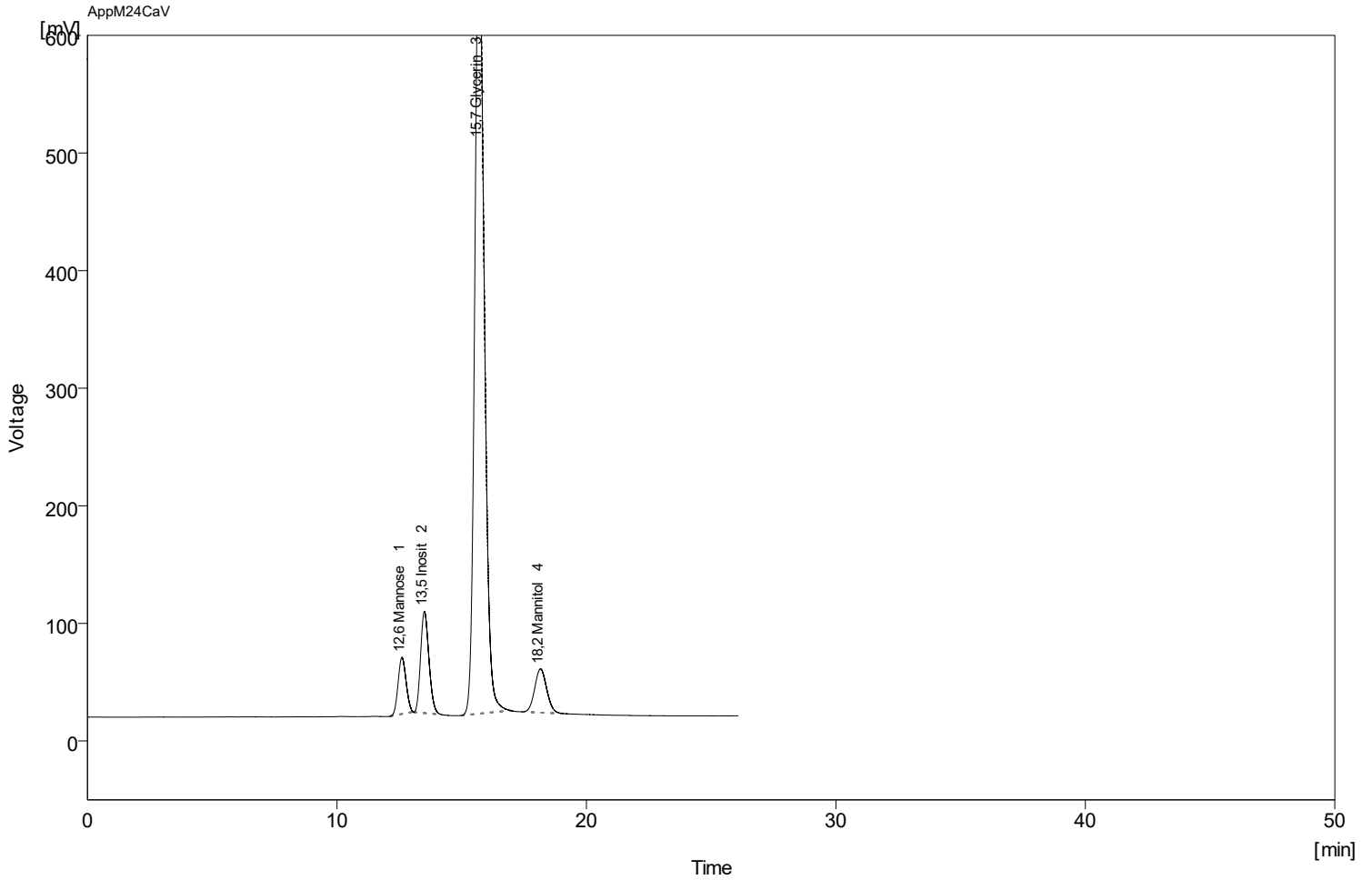


Column : AppliChrom SugarSep-Ca V; 300mm x 8mm; P/N SASCAV103008 Detection : RI
 Mobile Phase : H2O Temperature : 85C
 Flow Rate : 0.6mL/min Pressure : -
 Note : Sample Test Mix / Sugar - Sugar Alcohols



Clarity Lite - 24.05.2023 09_38_26

	Reten. Time [min]	Compound Name	Asymmetry [-]	Efficiency [th.pl]	Eff/l [t.p./m]	Resolution [-]
1	12,604	Mannose	1,147	6997	23322	
2	13,504	Inosit	1,320	7681	25603	1,480
3	15,691	Glycerin	1,353	8302	27672	3,360
4	18,157	Mannitol	1,145	6755	22516	3,146