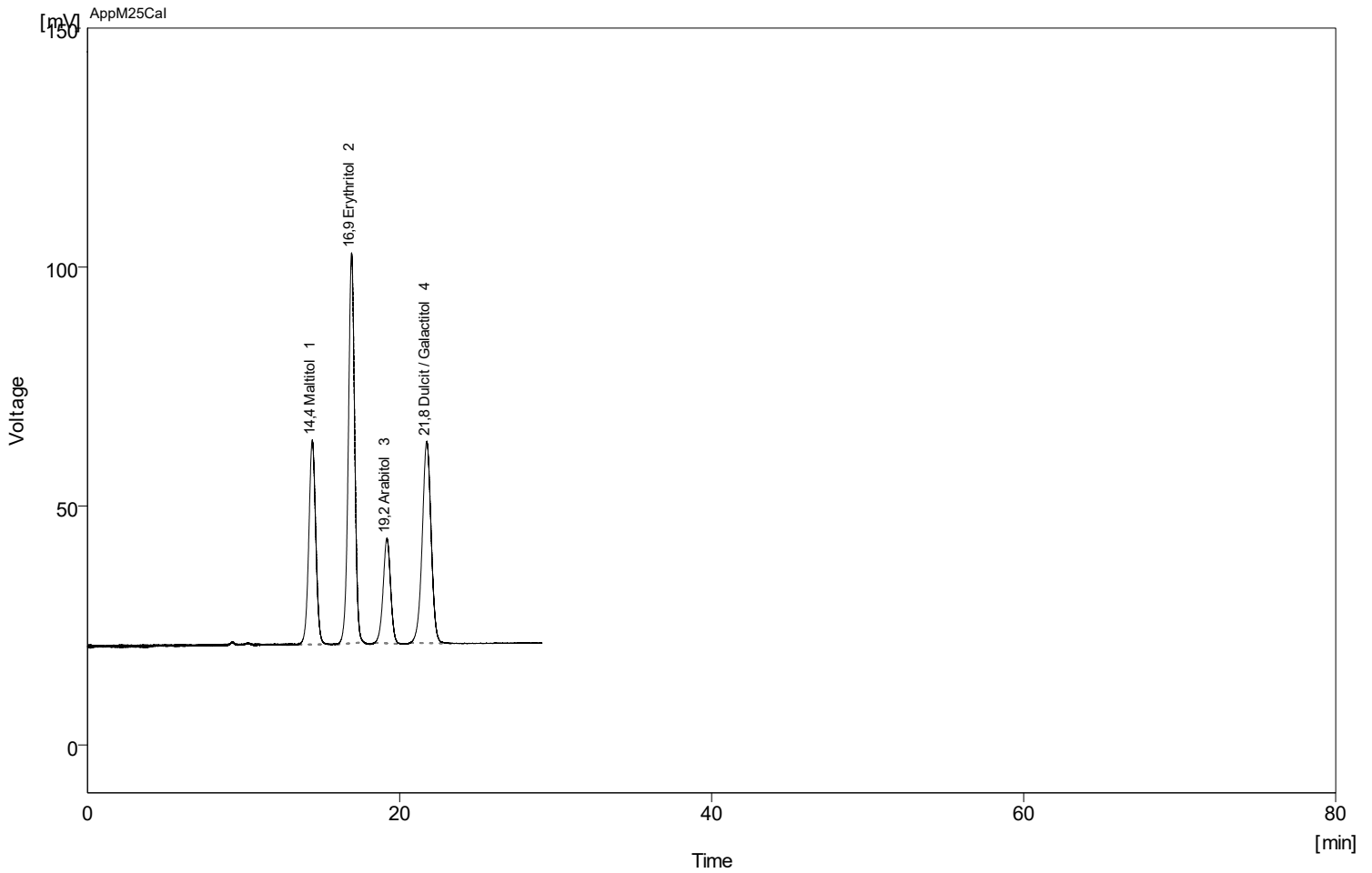


Column : AppliChrom SugarSep-Ca I; 300mm x 8mm; P/N SASCAI103008 Detection : RI
 Mobile Phase : H2O Temperature : 85C
 Flow Rate : 0.6mL/min Pressure : -
 Note : Sample Test Mix Sugar Alcohols



Clarity Lite - 11.04.2023 14_20_32

	Reten. Time [min]	Compound Name	Asymmetry [-]	Efficiency [th.pl]	Eff/l [t.p./m]	Resolution [-]
1	14,40	Maltitol	1,02	5130	17101	
2	16,92	Erythritol	0,98	8600	28668	3,28
3	19,20	Arabitol	0,92	7913	26376	2,87
4	21,75	Dulcitol / Galactitol	0,92	7217	24057	2,71