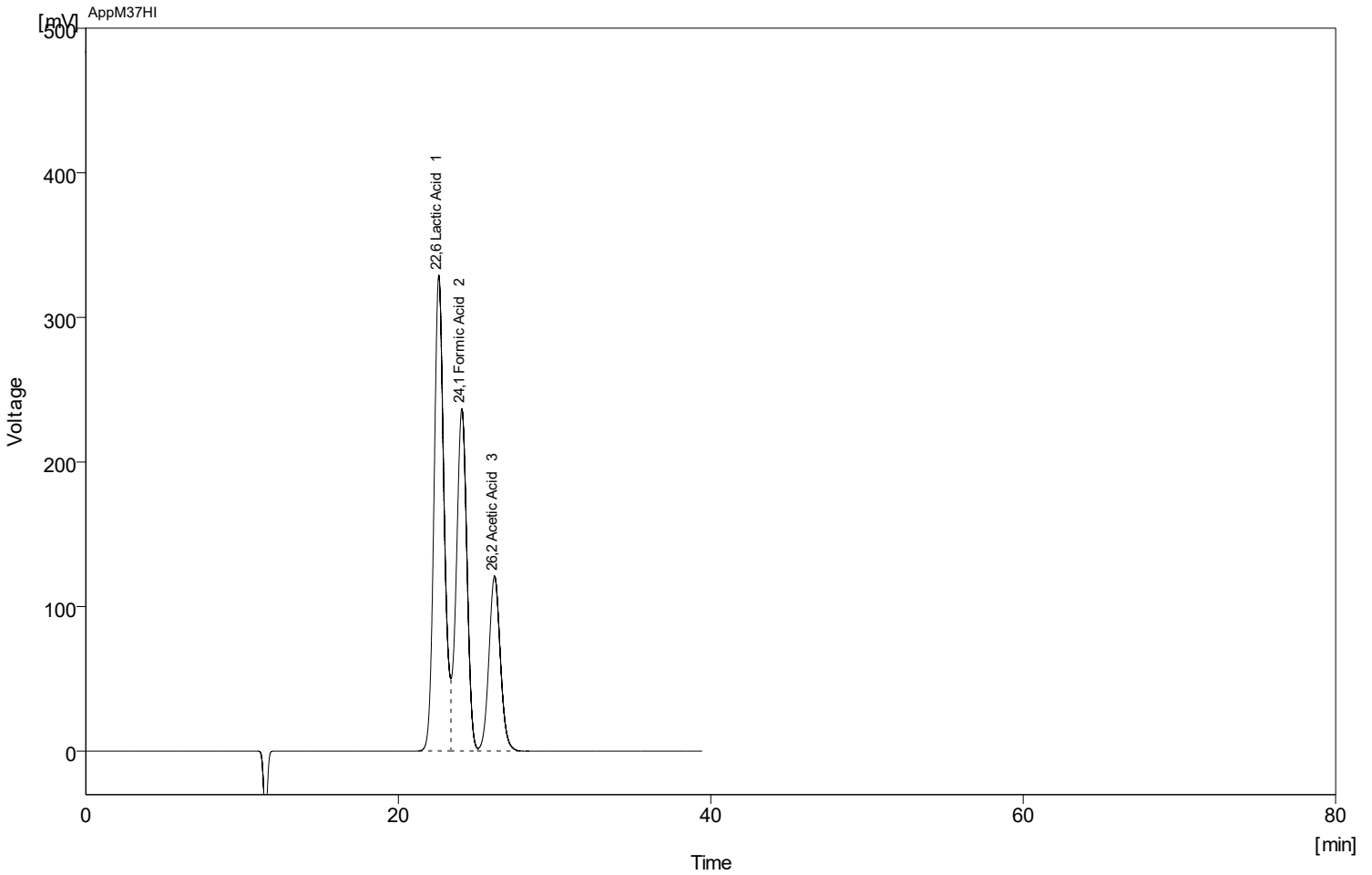


Column : AppliChrom SugarSep-H I; 300mm x 8mm; P/N SASHI103008 Detection : RI
 Mobile Phase : H2O / 5mM H2SO4 Temperature : 40C
 Flow Rate : 0.4 mL/min Pressure : -
 Note : Sample Test Mix M37 / Organic Acid



Clarity Lite - 26.06.2023 10_44_08

	Reten. Time [min]	Compound Name	Asymmetry [-]	Efficiency [th.pl]	Eff/l [t.p./m]	Resolution [-]
1	22,59	Lactic Acid	1,30	6160	20532	
2	24,07	Formic Acid	0,94	5980	19934	1,24
3	26,16	Acetic Acid	1,10	6259	20862	1,64