

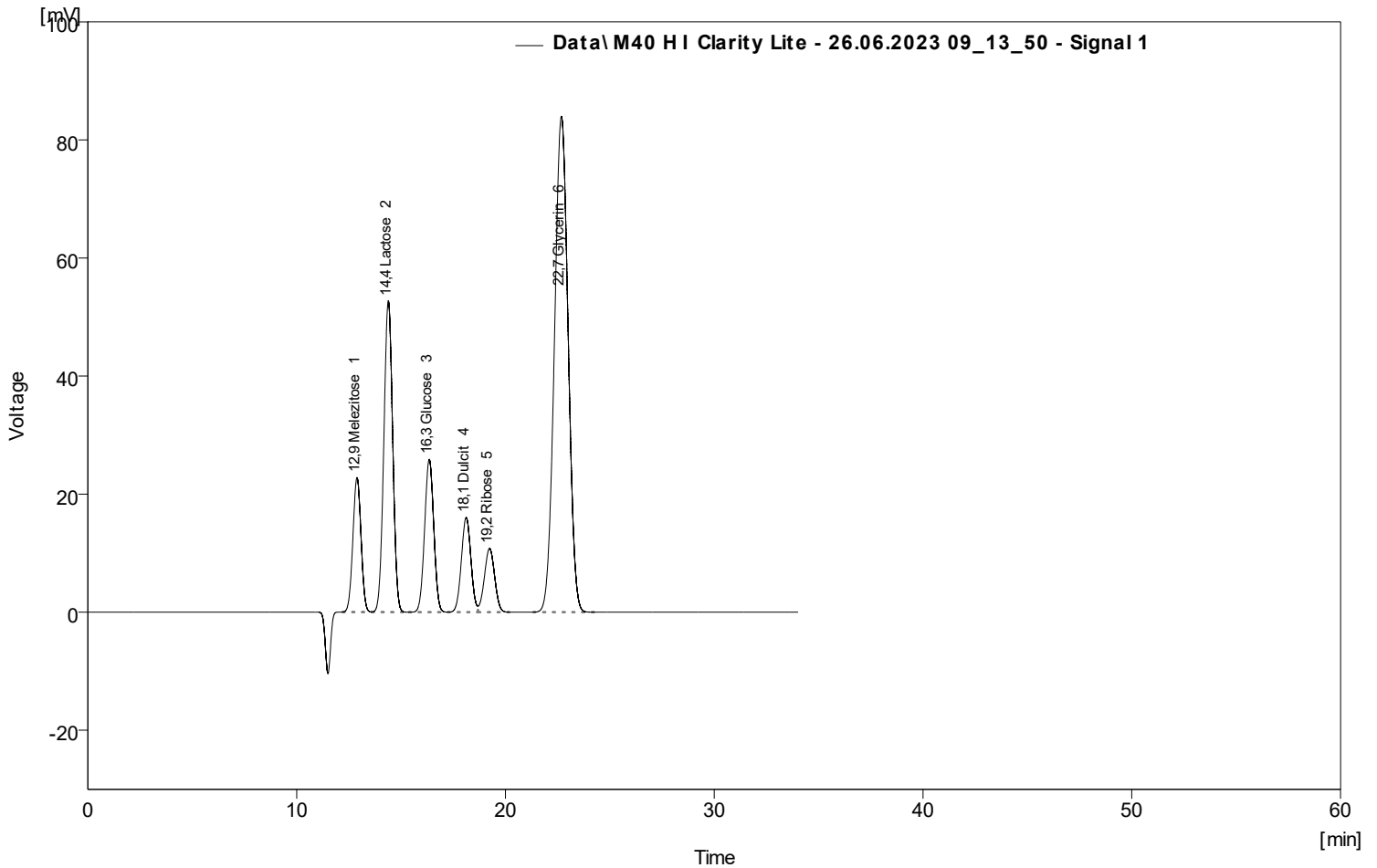
AppliChrom GmbH

Germendorfer Allee 20 - D-16515 Oranienburg

www.applichrom.com - www.sugar-hplc.com



Column : AppliChrom SugarSep-H I; 300mm x 8mm; P/N SASHI103008 Detection : RI
 Mobile Phase : H2O / 5mM H2SO4 Temperature : 40C
 Flow Rate : 0.4 mL/min Pressure : -
 Note : Sample Test Mix M40HI / Sugar_Sugar Alcohol



Column Performance Table (From 50% - Data\M40 H I Clarity Lite - 26.06.2023 09_13_50 - Signal 1)

	Reten. Time [min]	Compound Name	Asymmetry [-]	Efficiency [th.pl]	Eff/I [t.p./m]	Resolution [-]
1	12,89	Melezitose	1,00	5056	16852	
2	14,39	Lactose	1,00	5343	17810	1,99
3	16,35	Glucose	1,00	6472	21573	2,46
4	18,12	Dulcitol	1,02	7324	24413	2,14
5	19,24	Ribose	0,94	7120	23733	1,28
6	22,68	Glycerin	1,00	5574	18579	3,24