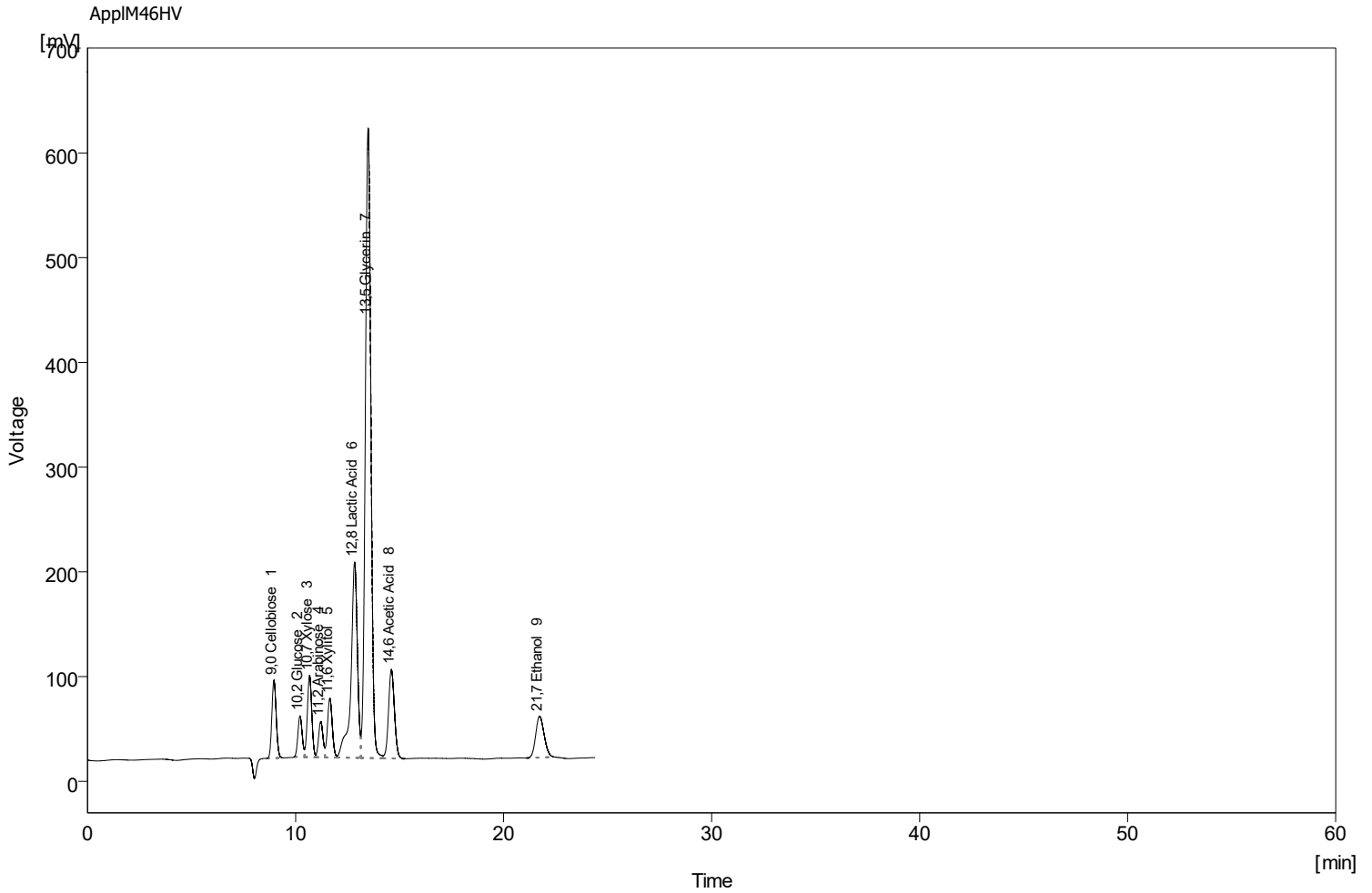


Column : AppliChrom SugarSep-H V; 300mm x 8mm; P/N SASHV103008 Detection : RI
 Mobile Phase : H2O / 0.1% H2SO4 Temperature : 80C
 Flow Rate : 0.6 mL/min Pressure : -
 Note : Sample Tex Mix M46 Sugars - Sugar Alcohol - Organic Acids



Clarity Lite - 14.08.2023 09_59_22

	Reten. Time [min]	Compound Name	Asymmetry [-]	Efficiency [th.pl]	Eff/l [t.p./m]	Resolution [-]
1	8,96	Cellobiose	1,14	8654	173082	
2	10,21	Glucose	1,11	11111	222218	3,25
3	10,67	Xylose	1,00	11717	234336	1,18
4	11,21	Arabinose	1,00	12498	249963	1,36
5	11,65	Xylitol	1,02	11957	239139	1,06
6	12,84	Lactic Acid	0,55	10611	212210	2,59
7	13,49	Glycerin	1,06	11925	238491	1,31
8	14,60	Acetic Acid	1,14	12783	255657	2,22
9	21,73	Ethanol	1,26	13430	268596	11,28