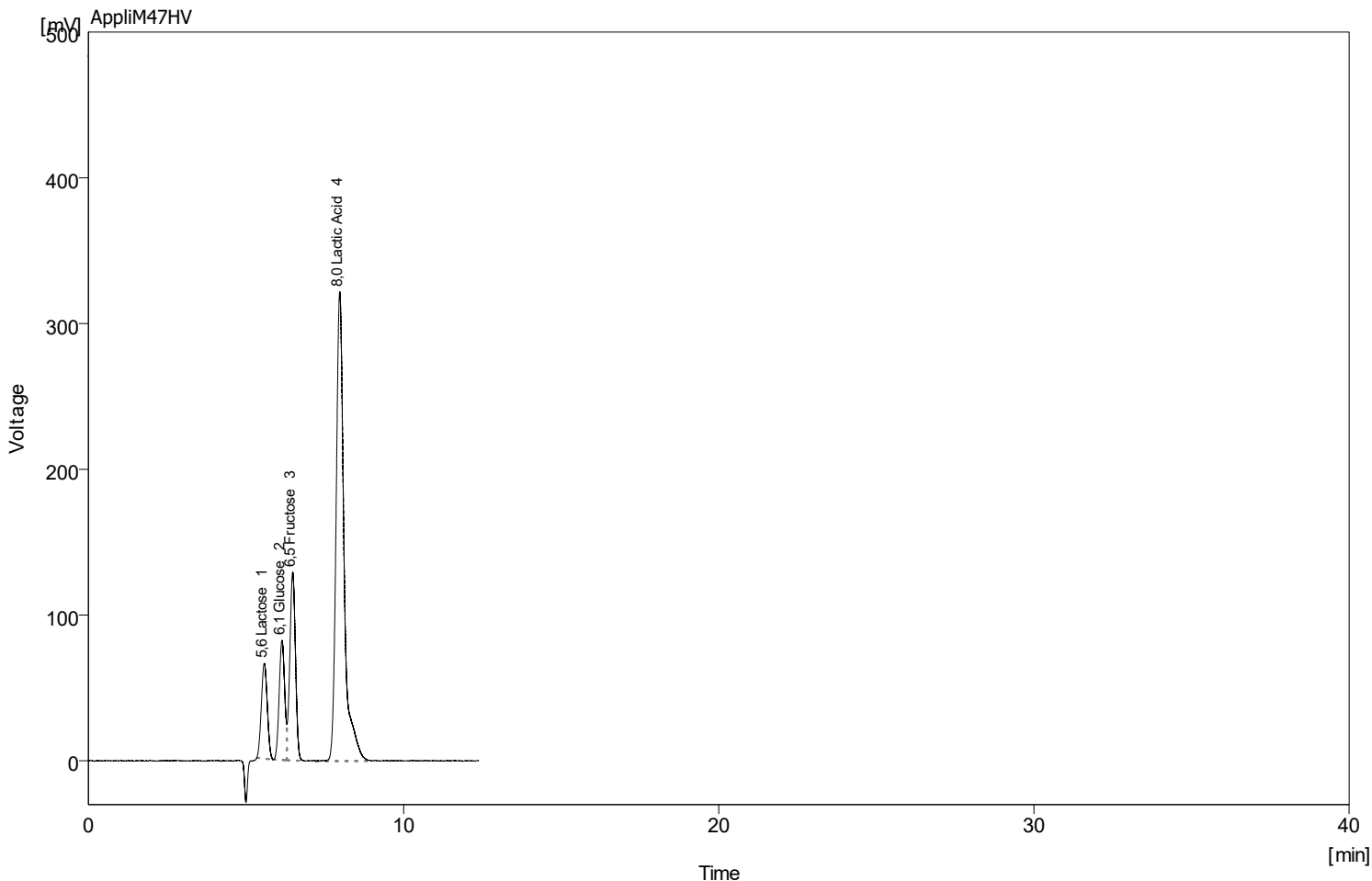


Column : AppliChrom SugarSep-H V; 300mm x8mm; P/N SASHV103008 Detection : RI
 Mobile Phase : H2O / 0.1% H2SO4 Temperature : 50C
 Flow Rate : 1.0 mL/min Pressure : -
 Note : Sample Test Mix ApplM47 / Sugars - Organic Acid



Clarity Lite - 14.08.2023 10_56_40

| | Reten. Time [min] | Compound Name | Asymmetry [-] | Efficiency [th.pl] | Eff/I [t.p./m] | Resolution [-] |
|---|-------------------|---------------|---------------|--------------------|----------------|----------------|
| 1 | 5,58 | Lactose | 1,03 | 3973 | 13244 | |
| 2 | 6,14 | Glucose | 0,89 | 5401 | 18005 | 1,64 |
| 3 | 6,48 | Fructose | 0,98 | 5962 | 19874 | 1,01 |
| 4 | 7,97 | Lactic Acid | 1,40 | 5865 | 19550 | 3,98 |