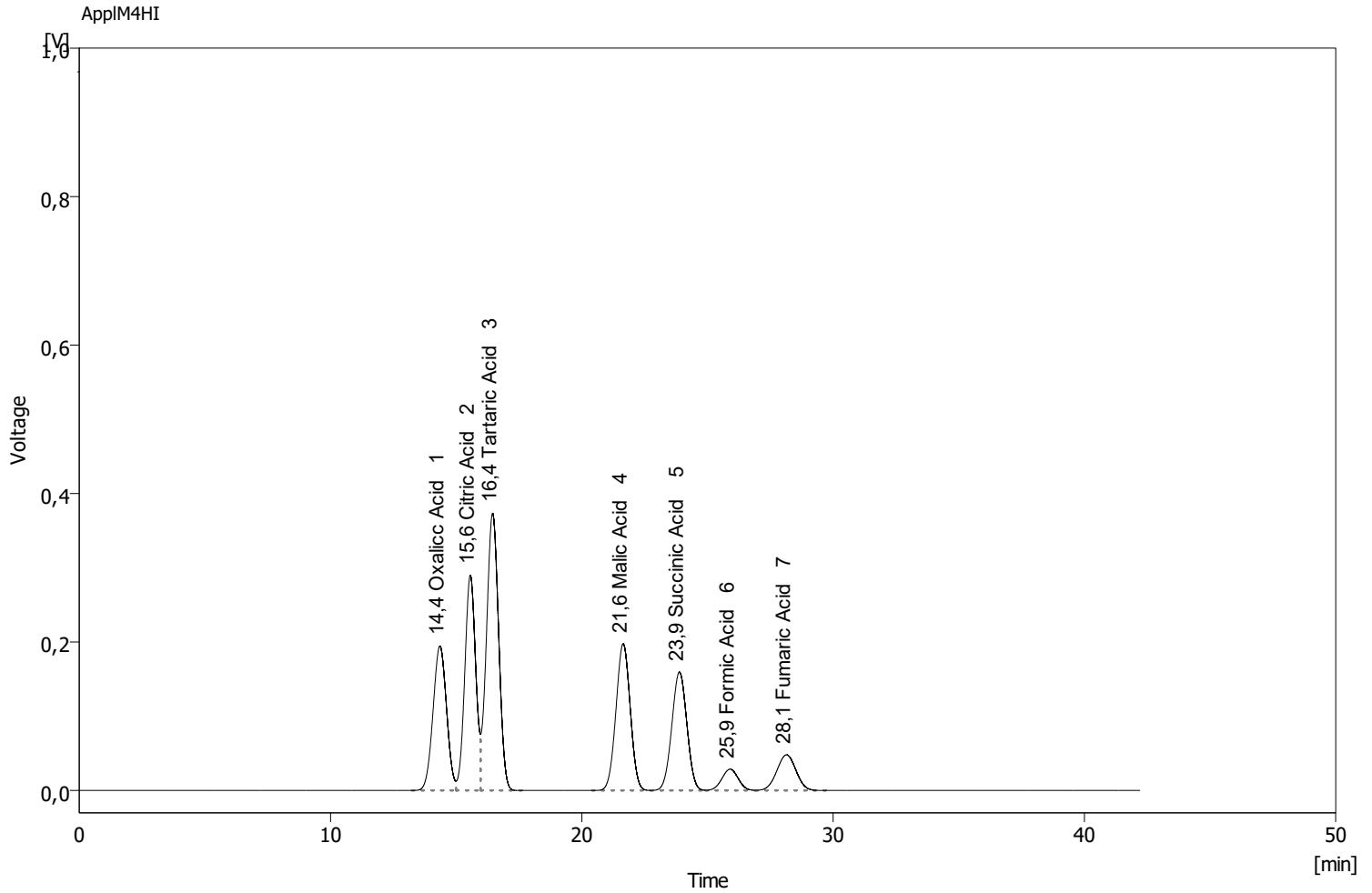


Column : AppliChrom SugarSep-H I; 300mm x 8mm; P/N SASHI103008 Detection : RI
 Mobile Phase : H2O/5mM H2SO4 Temperature : 40C
 Flow Rate : 0.4mL/min Pressure : -
 Note : Sample Test Mixture / Aliphatic Acids



Clarity Lite - 19.06.2023 11_17_25

	Reten. Time [min]	Compound Name	Asymmetry [-]	Efficiency [th.pl]	Eff/l [t.p./m]	Resolution [-]
1	14,350	Oxallic Acid	1,013	3305	11017	
2	15,561	Citric Acid	0,936	5802	19340	1,337
3	16,449	Tartaric Acid	1,012	5220	17401	1,030
4	21,645	Malic Acid	1,000	6788	22627	5,312
5	23,884	Succinic Acid	0,999	7403	24678	2,078
6	25,901	Formic Acid	1,001	7389	24632	1,747
7	28,145	Fumaric Acid	1,000	6344	21148	1,719